

# BLACK MALLEABLE IRON FITTINGS

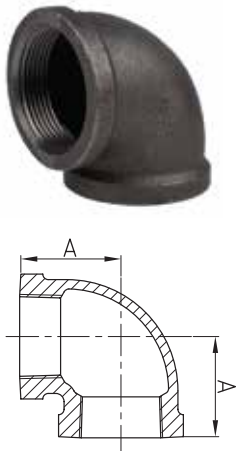


## Specification:

### BLACK MALLEABLE IRON FITTINGS

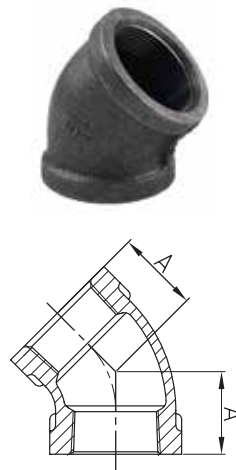
- ASTM A 197- Standard Spec for Cupola Malleable Iron
- ANSI B 16.3- Malleable Iron Threaded Fittings Classes 150
- ANSI/ASME B1.20.1- Pipe Threads, General Purpose (inch) NPT

#### 90° Elbow



Size	A	Weight (lbs.)
1/8	0.69	0.1
1/4	0.81	0.1
3/8	0.95	0.2
1/2	1.12	0.2
3/4	1.31	0.3
1	1.5	0.6
1 1/4	1.75	0.9
1 1/2	1.94	1.2
2	2.25	1.8
2 1/2	2.7	3.1
3	3.08	3.9
4	3.79	7.5
5	4.5	13.2
6	5.13	19.8

#### 45° Elbow

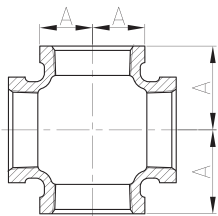


Size	A	Weight (lbs.)
1/4	0.73	0.1
3/8	0.80	0.1
1/2	0.88	0.2
3/4	0.98	0.3
1	1.12	0.5
1 1/4	1.29	0.7
1 1/2	1.43	1.1
2	1.68	1.7
2 1/2	1.95	2.9
3	2.17	3.4
4	2.61	6.4
6	3.46	15.4

\* Due to the continuous development of our products, design or construction may change without prior notice.

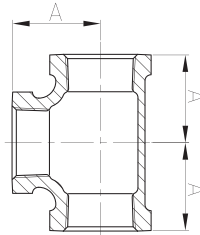
# BLACK MALLEABLE IRON FITTINGS

## Cross



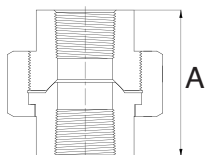
Size	A	Weight (lbs.)
1/8	0.69	0.2
1/4	0.81	0.2
3/8	0.95	0.3
1/2	1.12	0.3
3/4	1.31	0.6
1	1.5	1.1
1 1/4	1.75	1.4
1 1/2	1.94	1.9
2	2.25	2.8
2 1/2	2.7	5.0
3	3.08	7.3
4	3.79	12.6
5	4.5	-
6	5.13	-

## Tee



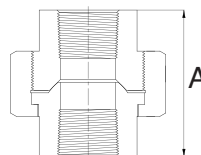
Size	A	Weight (lbs.)
1/8	0.69	0.1
1/4	0.81	0.1
3/8	0.95	0.2
1/2	1.12	0.3
3/4	1.31	0.5
1	1.5	0.8
1 1/4	1.75	1.2
1 1/2	1.94	1.6
2	2.25	2.5
2 1/2	2.7	4.2
3	3.08	6.1
4	3.79	9.7
5	4.5	15.4
6	5.13	26.4

## Union 150



Size	A	Weight (lbs.)
1/4	1.44	0.2
3/8	1.61	0.3
1/2	1.72	0.4
3/4	2.02	0.5
1	2.19	0.9
1 1/4	2.26	1.3
1 1/2	2.47	2.2
2	2.75	3.3
2 1/2	3.25	4.8
3	3.54	6.8
4	3.85	12.2

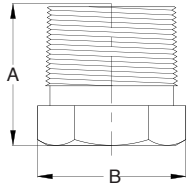
## Union 300



Size	A	Weight (lbs.)
1/2	1.81	0.5
3/4	2.12	0.8
1	2.31	1.1
2	3.23	3.6

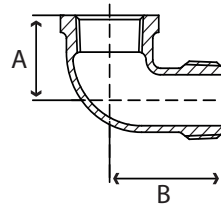
# BLACK MALLEABLE IRON FITTINGS

## Plug



Size	A	B	Weight (lbs.)
1/8	0.65	0.30	0.01
1/4	0.75	0.44	0.03
3/8	0.85	0.38	0.06
1/2	1.00	0.53	0.1
3/4	1.15	0.58	0.1
1	1.30	0.71	0.2
1 1/4	1.40	0.90	0.3
1 1/2	1.50	1.10	0.5
2	1.60	1.30	0.7
2 1/2	1.85	1.50	1.2
3	1.95	1.69	1.7
4	2.30	2.16	3.0
5	2.50	2.50	5.0
6	2.80	2.62	7.3

## Street Elbow 90



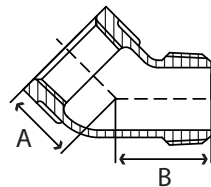
Size	A	B	Weight (lbs.)
1/8	0.69	1.00	0.05
1/4	0.81	1.19	0.1
3/8	0.95	1.44	0.2
1/2	1.12	1.63	0.2
3/4	1.31	1.89	0.3
1	1.5	2.14	0.6
1 1/4	1.75	2.45	0.8
1 1/2	1.94	2.69	1.2
2	2.25	3.26	2.0
2 1/2	2.7	3.86	3.6
3	3.08	4.51	4.2
4	3.79	5.69	9.1

## Cap



Size	A	Weight (lbs.)
1/4	1.06	0.05
3/8	1.16	0.1
1/2	1.34	0.1
3/4	1.52	0.2
1	1.67	0.3
1 1/4	1.93	0.5
1 1/2	2.15	0.6
2	2.53	1.1
2 1/2	2.88	1.6
3	3.18	2.2
4	3.69	3.9

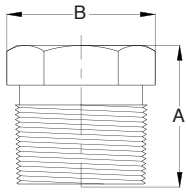
## Street Elbow 45



Size	A	B	Weight (lbs.)
1/8	0.65	0.85	0.1
1/4	0.73	0.94	0.1
3/8	0.80	1.03	0.1
1/2	0.88	1.15	0.2
3/4	0.98	1.29	0.3
1	1.12	1.47	0.5
1 1/4	1.29	1.71	0.8
1 1/2	1.43	1.88	0.9
2	1.68	2.22	1.5
2 1/2	1.95	2.57	2.7
3	2.17	3.00	3.6
4	2.61	3.70	9.2

# BLACK MALLEABLE IRON FITTINGS

## Bushing



Size	A	B Outside	B Inside	Weight (lbs.)
1/4 x 1/8	.61	0.64	-	0.05
3/8 x 1/4	.81	0.68	-	0.05
3/8 x 1/8	.81	0.68	-	0.05
1/2 x 3/8	.95	0.87	-	0.1
1/2 x 1/4	.95	0.87	-	0.1
1/2 x 1/8	.95	0.87	-	0.1
3/4 x 1/2	1.05	1.15	-	0.2
3/4 x 3/8	1.05	1.15	-	0.2
3/4 x 1/4	1.05	1.15	-	0.2
3/4 x 1/8	1.05	1.15	-	0.2
1 x 3/4	1.18	1.42	-	0.2
1 x 1/2	1.16	1.42	-	0.2
1 x 3/8	1.16	-	1.12	0.2
1 x 1/4	1.12	-	1.12	0.2
1 x 1/8	1.12	-	1.12	0.2
1 1/4 x 1	1.25	1.76	-	0.3
1 1/4 x 3/4	1.25	1.76	-	0.4
1 1/4 x 1/2	1.25	-	1.34	0.4
1 1/4 x 3/8	1.20	-	1.12	0.4
1 1/4 x 1/4	1.16	-	1.12	0.4
1 1/2 x 1 1/4	1.30	2	-	0.6
1 1/2 x 1	1.30	2	-	0.5
1 1/2 x 3/4	1.30	-	1.63	0.5
1 1/2 x 1/2	1.30	-	1.34	0.5
1 1/2 x 3/8	1.30	-	1.12	0.5
1 1/2 x 1/4	1.30	-	1.12	0.5
2 x 1 1/2	1.50	2.48	-	0.8
2 x 1 1/4	1.50	2.48	-	0.8
2 x 1	1.50	-	1.95	0.8

Size	A	B Outside	B Inside	Weight (lbs.)
2 x 3/4	1.50	-	1.63	0.8
2 x 1/2	1.50	-	1.34	0.8
2 x 3/8	1.40	-	1.12	0.8
2 x 1/4	1.40	-	1.12	0.7
2 1/2 x 2	1.65	2.98	-	1.5
2 1/2 x 1 1/2	1.58	2.68	-	1.4
2 1/2 x 1 1/4	1.58	-	2.39	1.4
2 1/2 x 1	1.58	-	1.95	1.5
2 1/2 x 3/4	1.58	-	1.63	1.5
2 1/2 x 1/2	1.70	-	1.34	1.5
3 x 2 1/2	1.90	3.86	-	2.1
3 x 2	1.80	3.28	-	2.1
3 x 1 1/2	1.70	-	2.68	2.1
3 x 1 1/4	1.70	-	2.39	2.1
3 x 1	1.70	-	1.95	2.0
3 x 3/4	1.75	-	1.63	2.0
3 x 1/2	1.88	-	1.34	2.0
3 1/2 x 3	1.75	4.62	-	1.9
3 1/2 x 2 1/2	1.70	3.86	-	2.5
3 1/2 x 2	1.94	-	3.28	2.4
3 1/2 x 1 1/2	1.75	-	2.68	2.4
3 1/2 x 1 1/4	1.75	-	2.39	2.4
3 1/2 x 1	1.75	-	1.95	2.4
4 x 3 1/2	2.33	5.2	-	2.5
4 x 3	2.10	4.62	-	3.3
4 x 2 1/2	2.10	-	3.86	3.9
4 x 2	1.90	-	3.28	3.8
4 x 1 1/2	1.90	-	2.68	4.2
4 x 1 1/4	1.90	-	2.39	2.7

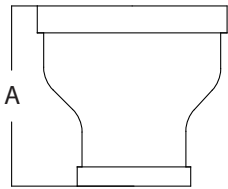
# BLACK MALLEABLE IRON FITTINGS

## Bushing (continued)



Size	A	B Outside	B Inside	Weight (lbs.)
4 x 1	1.90	-	1.95	4.5
6 x 4	2.30	-	5.79	-
6 x 3	2.30	-	4.62	-

## Bell Reducer



Size	A	Weights (lbs.)
1/4 x 1/8	1.00	0.1
3/8 x 1/4	1.13	0.1
3/8 x 1/8	1.13	0.1
1/2 x 3/8	1.25	0.1
1/2 x 1/4	1.25	0.1
1/2 x 1/8	1.25	0.1
3/4 x 1/2	1.44	0.2
3/4 x 3/8	1.44	0.2
3/4 x 1/4	1.44	0.2
3/4 x 1/8	1.44	0.2
1 x 3/4	1.69	0.3
1 x 1/2	1.69	0.3
1 x 3/8	1.69	0.3
1 x 1/4	1.69	0.3
1 x 1/8	1.69	0.3
1 1/4 x 1	2.06	0.5
1 1/4 x 3/4	2.06	0.5
1 1/4 x 1/2	2.06	0.5
1 1/4 x 3/8	2.06	0.5
1 1/4 x 1/4	2.06	0.6
1 1/2 x 1 1/4	2.31	0.6
1 1/2 x 1	2.31	0.7

Size	A	Weights (lbs.)
1 1/2 x 3/4	2.31	0.6
1 1/2 x 1/2	2.31	0.6
1 1/2 x 3/8	2.31	0.6
2 x 1 1/2	2.81	1.0
2 x 1 1/4	2.81	1.0
2 x 1	2.81	1.0
2 x 3/4	2.81	1.0
2 x 1/2	2.81	0.9
2 x 3/8	2.81	0.9
2 x 1/4	2.81	0.9
2 1/2 x 2	3.25	1.7
2 1/2 x 1 1/2	3.25	1.6
2 1/2 x 1 1/4	3.25	1.6
2 1/2 x 1	3.25	1.5
2 1/2 x 3/4	3.25	1.5
2 1/2 x 1/2	3.25	1.5
3 x 2 1/2	3.69	2.4
3 x 2	3.69	2.4
3 x 1 1/2	3.69	2.0
3 x 1 1/4	3.69	2.2
3 x 1	3.69	2.2
4 x 3 1/2	4.38	4.4
4 x 3	4.38	4.4
4 x 2 1/2	4.38	4.0
4 x 2	4.38	4.4