

FORGED STAINLESS STEEL FITTINGS



As per ASME standard B16.11 -"Forged Fittings, Socket-Welding and Threaded" the below table shows the schedule of pipe corresponding to each class of fitting for rating purposes.

PRESSURE RATINGS		
Class	Schedule	
	N.P.T.	S.W.
3000	160	-



Specification:

FORGED STAINLESS STEEL FITTINGS & UNIONS

- The material for Forged Stainless Steel Fittings conforms to the requirements of ASTM/ASME A182
- Forged Stainless Steel Fittings Design / Dimensions conform to ASME B16.11. Contact UVI for exact dimensional information.
- NPT threads on Forged Stainless Steel Fittings conform to ANSI/ASME B1.20.1
- Forged Stainless Steel unions conform to MSS-SP-83
- Forged Stainless Steel outlet fittings conform to MSS-SP-97

ENGINEER APPROVAL

3,000 PSI

- 90° Elbow
- 45° Elbow
- Tee
- Coupling
- Union
- Hex Plug
- Hex Bushing

JOB: _____ DATE: ___/___/___

MEETS DIMENSIONAL SPECIFICATIONS: YES NO

MEETS MATERIAL SPECIFICATIONS: YES NO

MEETS PRESSURE / TEMPERATURE SPECIFICATIONS: YES NO

NOTES: _____

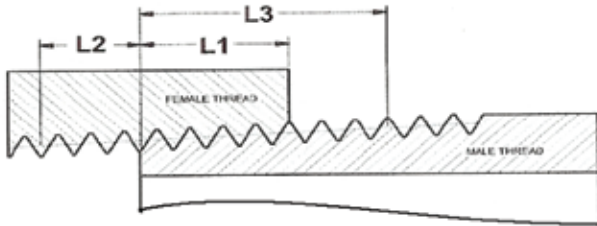
ENGINEER NAME: _____

ENGINEER SIGNATURE: _____

* Due to the continuous development of our products, design or construction may change without prior notice.

FORGED STAINLESS STEEL FITTINGS

TECHNICAL DATA THREADED FITTINGS



PIPE THREADS AS PER ASME B1.20.1

NOM SIZE	THREADS PER INCH	(L1) HANDTIGHT ENGAGEMENT (IN)	(L2) WRENCH TIGHT ENGAGEMENT (IN)	(L3) TOTAL ENGAGEMENT (IN)
3/8	18	0.2400	0.1678	0.4078
1/2	14	0.3200	0.2137	0.5337
3/4	14	0.3390	0.2067	0.5457
1	11 1/2	0.4000	0.2828	0.6828
1 1/4	11 1/2	0.4200	0.2868	0.7068
1 1/2	11 1/2	0.4200	0.3035	0.7235
2	11 1/2	0.4360	0.3205	0.7565
2 1/2	8	0.6820	0.4555	1.1375
3	8	0.7660	0.4340	1.2000
4	8	0.8440	0.4560	1.3000

INSTALLATION INSTRUCTIONS:

THREAD INSPECTION:

Prior to installing any threaded fitting always inspect the threads to be sure that:

- There is no dirt or debris in the threads and the thread length is correct

APPLICATION OF PIPE SEALANT:

- Use a pipe sealant that is fast drying, sets up semi-hard and is vibration resistant
- For outlets 1/2" to 1" an anaerobic pipe sealant is recommended
- Thread tape containing Teflon* may also be used

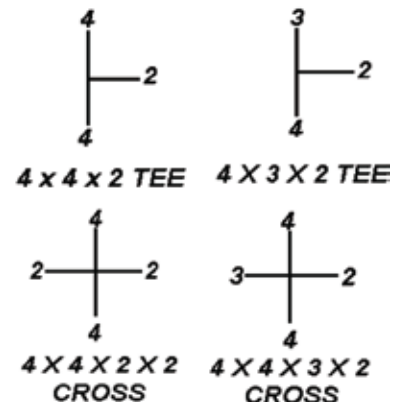
TIGHTENING OF BRANCH PIPE:

- For outlet sizes up to 4" , wrench tighten three full turns past hand tight

*Teflon is a registered trademark of Dupont

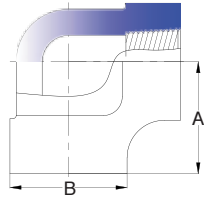
SCHEDULE 80 & XXH PIPE DIMENSIONS		
NOM SIZE	OUTSIDE DIAMETER	
	ACTUAL O.D. (IN)	TOLERANCE (IN)
1/2"	0.840	
3/4"	1.050	+0.010 / -0.01
1"	1.315	+0.013 / -0.013
1 1/4"	1.660	+0.016 / -0.016
1 1/2"	1.900	+0.019 / -0.019
2"	2.375	+0.024 / -0.024
2 1/2"	2.875	+0.029 / -0.024
3"	3.500	+0.034 / -0.031
4"	4.500	+0.045 / -0.031
5"	5.563	+0.056 / -0.031
6"	6.625	+0.063 / -0.031
8"	8.625	+0.063 / -0.031
10"	10.750	+0.063 / -0.031
12"	12.750	+0.063 / -0.031

IDENTIFICATION OF REDUCING FITTINGS



FORGED STAINLESS STEEL FITTINGS

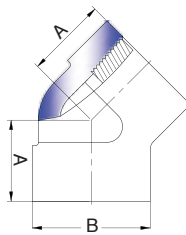
90° Elbow



3,000 PSI Weights (LBS) • Dimensions (IN) • QTY (Case Quantity)

ITEM CODE	SIZE	A	B	QTY	WEIGHT	LIST PRICE
SFFT3E01	1/8	0.81	0.88	160	0.31	
SFFT3E02	1/4	0.97	1.00	130	0.31	
SFFT3E03	3/8	1.12	1.31	90	0.64	
SFFT3E04	1/2	1.31	1.5	50	0.90	
SFFT3E06	3/4	1.50	1.81	32	1.50	
SFFT3E10	1	1.75	2.19	20	2.31	
SFFT3E12	1 1/4	2.00	2.44	18	2.87	
SFFT3E14	1 1/2	2.38	2.97	8	5.40	
SFFT3E20	2	2.50	3.31	6	5.60	
SFFT3E24	2 1/2	3.25	4.00	2	11.77	
SFFT3E30	3	3.75	4.75	2	17.35	
SFFT3E40	4	4.50	6.00	1	30.81	

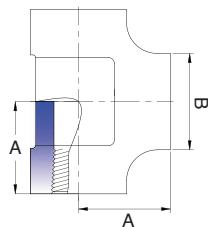
45° Elbow



3,000 PSI Weights (LBS) • Dimensions (IN) • QTY (Case Quantity)

ITEM CODE	SIZE	A	B	QTY	WEIGHT	LIST PRICE
SFFT3F02	1/4	0.75	1.00	130	0.31	
SFFT3F03	3/8	0.88	1.31	90	0.62	
SFFT3F04	1/2	1.00	1.5	70	0.75	
SFFT3F06	3/4	1.12	1.81	40	1.08	
SFFT3F10	1	1.31	2.19	25	1.94	
SFFT3F12	1 1/4	1.38	2.44	18	2.03	
SFFT3F14	1 1/2	1.69	2.97	10	3.83	
SFFT3F20	2	1.72	3.31	6	4.23	
SFFT3F30	3	2.50	4.75	2	16.20	
SFFT3F40	4	3.12	6.00	1	33.06	

Tee Elbow

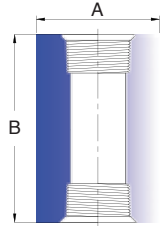


3,000 PSI Weights (LBS) • Dimensions (IN) • QTY (Case Quantity)

ITEM CODE	SIZE	A	B	QTY	WEIGHT	LIST PRICE
SFFT3T01	1/8	0.81	0.88	120	0.40	
SFFT3T02	1/4	0.97	1.00	100	0.42	
SFFT3T03	3/8	1.12	1.31	90	0.84	
SFFT3T04	1/2	1.31	1.50	40	1.19	
SFFT3T06	3/4	1.50	1.81	32	1.81	
SFFT3T10	1	1.75	2.19	15	3.02	
SFFT3T12	1 1/4	2.00	2.44	12	3.61	
SFFT3T14	1 1/2	2.38	2.97	6	6.83	
SFFT3T20	2	2.50	3.31	5	7.16	
SFFT3T30	3	3.75	4.75	1	21.64	
SFFT3T40	4	4.50	6.00	1	38.20	

FORGED STAINLESS STEEL FITTINGS

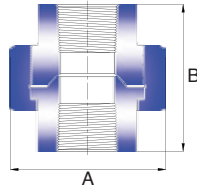
Coupling



3,000 PSI Weights (LBS) • Dimensions (IN) • QTY (Case Quantity)

ITEM CODE	SIZE	A	B	QTY	WEIGHT	LIST PRICE
SFFT3CP01	1/8	0.62	1.25	400	0.09	
SFFT3CP02	1/4	0.75	1.38	300	0.11	
SFFT3CP03	3/8	0.88	1.50	250	0.13	
SFFT3CP04	1/2	1.12	1.88	180	0.31	
SFFT3CP06	3/4	1.33	2.00	100	0.44	
SFFT3CP10	1	1.75	2.38	50	0.82	
SFFT3CP12	1 1/4	2.25	2.62	25	1.56	
SFFT3CP14	1 1/2	2.5	3.12	18	2.27	
SFFT3CP20	2	3.00	3.38	12	3.00	
SFFT3CP24	2 1/2	3.62	3.62	6	4.72	
SFFT3CP30	3	4.25	4.25	3	6.94	
SFFT3CP40	4	5.50	4.75	2	13.05	

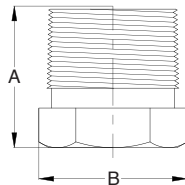
Union



3,000 PSI Weights (LBS) • Dimensions (IN) • QTY (Case Quantity)

ITEM CODE	SIZE	A	B	QTY	WEIGHT	LIST PRICE
SFFT3U02	1/4	1.48	1.66	90	0.22	
SFFT3U03	3/8	1.66	1.83	75	0.37	
SFFT3U04	1/2	1.93	2.00	60	0.64	
SFFT3U06	3/4	2.38	2.31	36	1.06	
SFFT3U10	1	2.78	2.42	24	1.59	
SFFT3U12	1 1/4	3.35	2.86	12	2.47	
SFFT3U14	1 1/2	3.70	3.00	10	3.15	
SFFT3U20	2	4.42	3.50	5	4.85	
SFFT3U30	3	6.15	4.42	2	11.92	
SFFT3U40	4	7.76	5.01	1	26.45	

Hex Plug

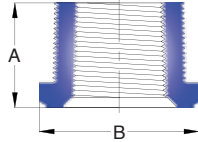


3,000 PSI Weights (LBS) • Dimensions (IN) • QTY (Case Quantity)

ITEM CODE	SIZE	A	B	QTY	WEIGHT	LIST PRICE
SFFT3HP01	1/8	0.63	0.44	500	0.02	
SFFT3HP02	1/4	0.69	0.62	400	0.04	
SFFT3HP03	3/8	0.81	0.69	350	0.11	
SFFT3HP04	1/2	0.87	0.88	250	0.13	
SFFT3HP06	3/4	1.00	1.06	200	0.31	
SFFT3HP10	1	1.13	1.38	100	0.44	
SFFT3HP12	1 1/4	1.37	1.75	60	0.90	
SFFT3HP14	1 1/2	1.43	2.00	50	1.21	
SFFT3HP20	2	1.57	2.50	25	2.09	
SFFT3HP24	2 1/2	1.81	3.00	12	3.92	
SFFT3HP30	3	1.93	3.50	8	6.06	
SFFT3HP40	4	2.25	4.62	4	13.66	

FORGED STAINLESS STEEL FITTINGS

Hex Bushing



3,000 PSI **Weights (LBS) • Dimensions (IN) • QTY (Case Quantity)**

ITEM CODE	SIZE	A	B	QTY	WEIGHT	LIST PRICE
SFFT3HB0201	¼ X ⅛	0.56	0.62	600	0.09	
SFFT3HB0302	⅜ X ¼	0.66	0.69	500	0.11	
SFFT3HB0401	½ X ⅛	0.75	0.88	400	0.20	
SFFT3HB0402	½ X ¼	0.75	0.88	400	0.20	
SFFT3HB0403	½ X ⅜	0.75	0.88	400	0.20	
SFFT3HB0602	¾ X ¼	0.84	1.06	200	0.33	
SFFT3HB0603	¾ X ⅜	0.84	1.06	200	0.33	
SFFT3HB0604	¾ X ½	0.84	1.06	200	0.33	
SFFT3HB1002	1 X ¼	1.00	1.38	100	1.04	
SFFT3HB1003	1 X ⅜	1.00	1.38	100	1.04	
SFFT3HB1004	1 X ½	1.00	1.38	100	1.04	
SFFT3HB1006	1 X ¾	1.00	1.38	100	1.04	
SFFT3HB1204	1 ¼ X ½	1.09	1.75	60	0.99	
SFFT3HB1210	1 ¼ X 1	1.09	1.75	60	0.99	
SFFT3HB1403	1 ½ X ⅜	1.12	2.00	50	1.15	
SFFT3HB1404	1 ½ X ½	1.12	2.00	50	1.15	
SFFT3HB1406	1 ½ X ¾	1.12	2.00	50	1.15	
SFFT3HB1410	1 ½ X 1	1.12	2.00	50	1.15	
SFFT3HB1412	1 ½ X 1 ¼	1.12	2.00	50	1.15	
SFFT3HB2002	2 X ¼	1.22	2.50	25	4.25	
SFFT3HB2004	2 X ½	1.22	2.50	25	4.25	
SFFT3HB2006	2 X ¾	1.22	2.50	25	4.25	
SFFT3HB2010	2 X 1	1.22	2.50	25	4.25	
SFFT3HB2012	2 X 1 ¼	1.22	2.50	25	4.25	
SFFT3HB2014	2 X 1 ½	1.22	2.50	25	4.25	
SFFT3HB3010	3 X 1	1.53	3.50	10	4.89	
SFFT3HB3020	3 X 2	1.53	3.50	10	4.89	
SFFT3HB4020	4 X 2	1.75	4.62	5	8.82	
SFFT3HB4030	4 X 3	1.75	4.62	5	8.82	