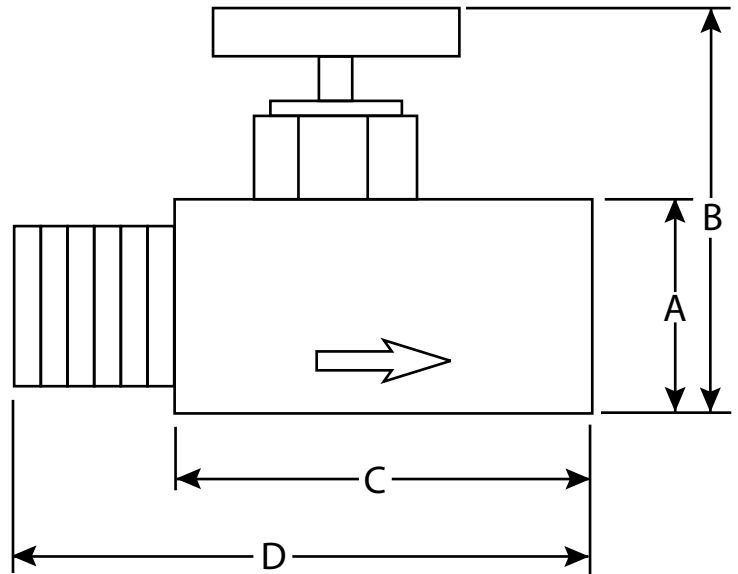


STAINLESS STEEL MINI NEEDLE VALVE
SERIES: MVDS



SPECIFICATIONS

RATED TO 6,000 PSI
STAINLESS STEEL CONSTRUCTION
VITON PACKING AND SEALS
WORKING TEMPERATURE -20 DEG F TO 100 DEG F
THREADS CONFORM TO ASME B1.20.1
AVAILABLE IN MxM, MxF AND FXF

PART	MATERIAL
ROUND KNOB	303 STAINLESS STEEL
STEM	304 STAINLESS STEEL
BONNET	316 STAINLESS STEEL
VALVE BODY	316 STAINLESS STEEL

DIMENSIONS

NPS	PART #	STYLE	WEIGHT	A	B	C	D
1/4"	COPMVDS4	FXF	0.66	.75"	1.718"	1.312"	1.812"
1/4"	COPMVDS5	MXM	0.66	.75"	1.718"	1.312"	1.812"
1/4"	COPMVDS6	MXF	0.66	.75"	1.718"	1.312"	1.812"

** Due to the continuous development of our products, design or construction may change without prior notice*