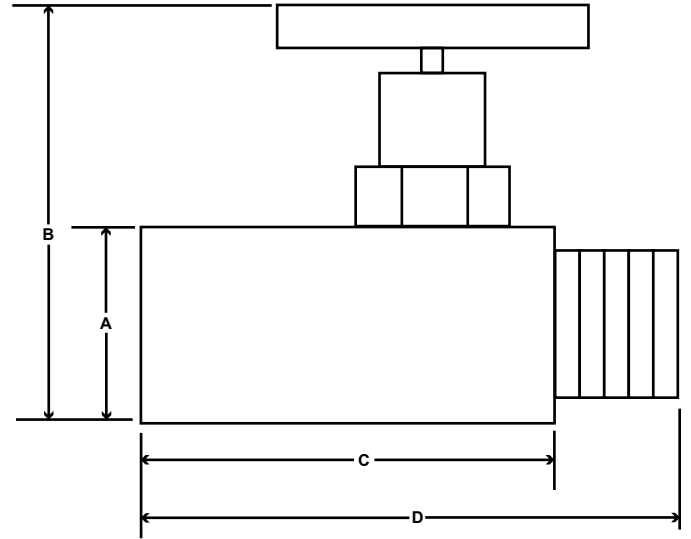
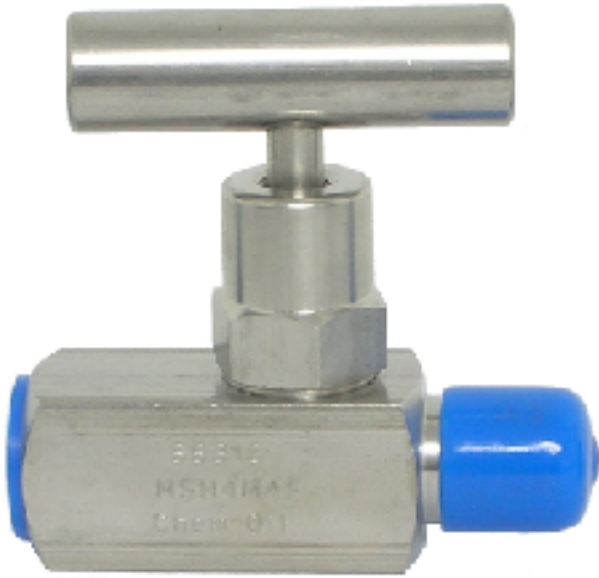


STAINLESS STEEL M X F MINI NEEDLE VALVE
SERIES: COPMSH



SPECIFICATIONS

RATED TO 6,000 PSI
STAINLESS STEEL CONSTRUCTION
VITON PACKING AND SEALS
WORKING TEMPERATURE -20 DEG F TO 100 DEG F
THREADS CONFORM TO ASME B1.20.1
AVAILABLE IN MxM, MxF AND FXF

PART	MATERIAL
T-HANDLE	303 STAINLESS STEEL
STEM	304 STAINLESS STEEL
BONNET	316 STAINLESS STEEL
VALVE BODY	316 STAINLESS STEEL

DIMENSIONS

NPS	PART #	STYLE	WEIGHT	PT	A	B	C	D
1/4"	COPMSH4M4F	M X F	0.71	1/8"	.75"	2.37"	1.65"	2.31"

** Due to the continuous development of our products, design or construction may change without prior notice*