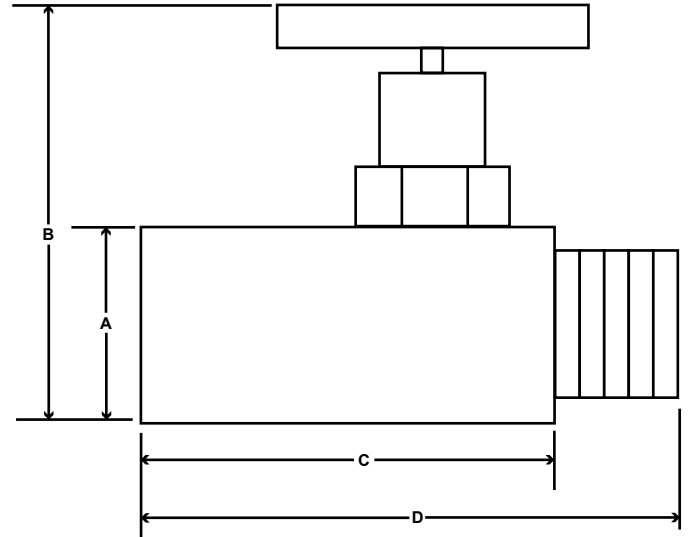
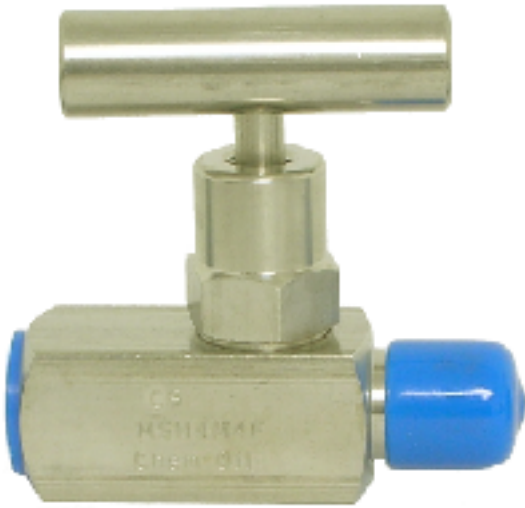




**CARBON STEEL M X F MINI NEEDLE VALVE**  
**SERIES: COPMCH**



**SPECIFICATIONS**

**RATED TO 6,000 PSI**  
**CARBON STEEL CONSTRUCTION**  
**VITON PACKING AND SEALS**  
**WORKING TEMPERATURE - 20 DEG F TO 100 DEG F**  
**THREADS CONFORM TO ASME B1.20.1**

	<b>ITEM</b>	<b>MATERIAL</b>
1	Handle Fixing Screw	CARBON STEEL
2	Handle	CARBON STEEL
3	Stem	SS 316
4	Back Up Ring	Teflon
5	O - Ring	Viton
6	Bonnet Lock Pin	CARBON STEEL
7	Bonnet	CARBON STEEL
8	Body	CARBON STEEL

**DIMENSIONS**

<b>NPS</b>	<b>PART #</b>	<b>STYLE</b>	<b>WEIGHT</b>	<b>PT</b>	<b>A</b>	<b>B</b>	<b>C</b>	<b>D</b>
1/4"	COPMCH4M4F	M X F	0.71	1/8"	.75"	2.37"	1.65"	2.31"

*\* Due to the continuous development of our products, design or construction may change without prior notice*